

# UL243

## Conversion Kit<sup>®</sup> for Komatsu WX22H Hybrid Loader



Ask to see Immersive Technologies' extensive catalog of quantified business improvements, solving problems in areas such as safety, productivity, reactive maintenance and the availability of skilled equipment operators.

**REAL RESULTS**  
MEAN IMPROVEMENTS\*

**SAFETY**

- ↑ 56% Correct Emergency Response
- ↓ 54% Traffic Incidents

**UNSCHEDULED MAINTENANCE**

- ↓ 65% Brake Abuse
- ↓ 63% Engine Overspeed

**COST SAVINGS**

- ↓ 51% Training Hours on Equipment
- ↑ 24% Tire Life

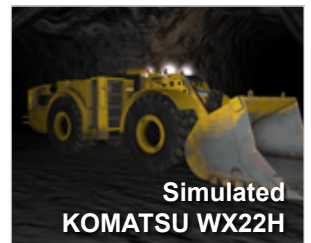
**PRODUCTIVITY**

- ↓ 16% Spot Time
- ↑ 10% Payloads

\* All results are average in-field improvements, documented and verified by external parties.

Immersive Technologies' UL243 Conversion Kit provides the ultimate in training realism for mines focused on increasing operator safety, improving productivity and reducing levels of unscheduled maintenance. The Conversion Kit includes a complete replica cab of the Komatsu WX22H Hybrid Loader, with fully functional controls and instrumentation.

With mining equipment becoming increasingly technically sophisticated, the level of information, experience and organizational competencies required to accurately simulate these machines also increases. Through Immersive Technologies' industry experience, you can be assured your training solution will be the only accurate and true representation of the real machine available.



Expect Results

# UL243 Conversion Kit® for Komatsu WX22H Hybrid Loader



High fidelity replicated LINC'S II Control System with full color operator interface.



Fully configurable OEM joystick controls make this Conversion Kit suitable for every mining operation.



Integral to operator efficiency training, the Kinetic Energy Storage System (KESS) accurately responds to use of the Speed Control pedal.



Conversion Kit Features

CONVERSION KIT® COMPATIBLE  
WITH SIMULATOR SERIES

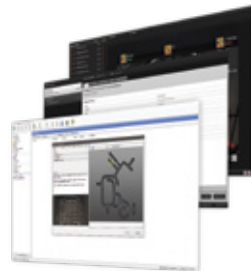
**IM360**

## Innovative Simulator Training Software

Immersive Technologies' SimControl software includes a range of specific Komatsu WX22H operator errors for recording and measuring incorrect operator behaviors. In addition, SimControl allows a trainer to initiate machine faults or incidents in order to train and assess operators in responding appropriately.

Training opportunities include:

- Hazard Avoidance
- Operator Productivity
- Gear Management
- Site Safety Procedures
- Minimizing  
Unscheduled Maintenance



## Industry Leading Mining Simulators

As the world's largest supplier of mining equipment simulators, Immersive Technologies has deployed solutions in 45 countries and works closely with mining operations and equipment manufacturers to solve real industry problems in areas of safety, productivity, reactive maintenance and the availability of skilled personnel. Immersive Technologies is the only equipment simulator supplier with a consistent and proven track record of delivering significant and measurable in-field improvements.

This experience, together with ongoing feedback from our mining customer base and Original Equipment Manufacturer alliance partners, has provided Immersive Technologies with the knowledge necessary to develop the industry standard in Advanced Equipment Simulators. Our solutions incorporate the industry's most advanced training functionality ensuring your operators are safer and your site is more profitable.

