

T7

Conversion Kit® for Cat® 769D, 773D & 777D Haul Trucks



Ask to see Immersive Technologies' extensive catalog of quantified business improvements, solving problems in areas such as safety, productivity, reactive maintenance and the availability of skilled equipment operators.

REAL RESULTS
MEAN IMPROVEMENTS*

SAFETY

- ↑ 54% Correct Emergency Response
- ↓ 47% Traffic Incidents

UNSCHEDULED MAINTENANCE

- ↓ 65% Brake Abuse
- ↓ 62% Engine Overspeed

COST SAVINGS

- ↓ 54% Training Hours on Equipment
- ↑ 20% Tire Life

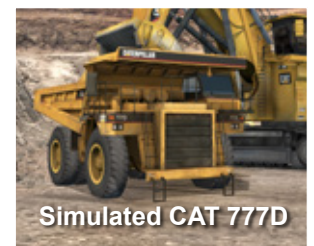
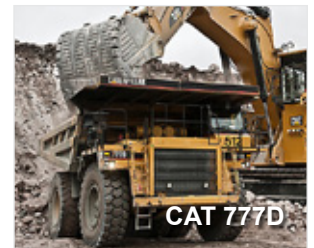
PRODUCTIVITY

- ↓ 15% Spot Time
- ↑ 14% Payloads

* All results are average in-field improvements, documented and verified by external parties.

Immersive Technologies' Conversion Kit development for the Cat® 769D, 773D and 777D Trucks includes a complete replica Cat® 769D, 773D and 777D Truck cab, with fully functional controls and instrumentation sourced directly from Caterpillar.

With mining equipment becoming increasingly technically sophisticated, the level of information, experience and organizational competencies required to accurately simulate these machines also increases. Through Immersive Technologies' industry experience, you can be assured your training solution will be the only accurate and true representation of the real machine available.



Expect Results

T7 Conversion Kit[®] for Cat[®] 769D, 773D & 777D Haul Trucks



Genuine gauges, speedometer and Caterpillar[®] Electronic Monitoring System (CEMS)



Transmission control, park brake and fire extinguisher



Caterpillar[®] Payload Measurement System (located on overhead console)



Conversion Kit Features

CONVERSION KIT[®] COMPATIBLE WITH SIMULATORS

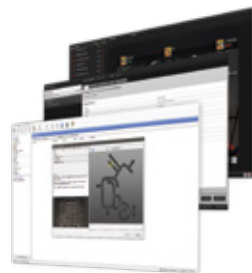
PRO4 IM360 LX6 LX3

Innovative Simulator Training Software

Immersive Technologies' SimControl software includes a range of specific Cat[®] 769D, 773D and 777D operator errors for recording and measuring incorrect operator behaviors. In addition, SimControl allows a trainer to initiate machine faults or incidents in order to train and assess operators in responding appropriately.

Training opportunities include:

- Hazard Avoidance
- Operator Productivity
- Fuel Efficiency
- Tire Preservation
- Site Safety Procedures
- Minimizing Unscheduled Maintenance



Industry Leading Mining Simulators

As the world's largest supplier of mining equipment simulators, Immersive Technologies has deployed solutions in 45 countries and works closely with mining operations and equipment manufacturers to solve real industry problems in areas of safety, productivity, reactive maintenance and the availability of skilled personnel. Immersive Technologies is the only equipment simulator supplier with a consistent and proven track record of delivering significant and measurable in-field improvements.

This experience, together with ongoing feedback from our mining customer base and Original Equipment Manufacturer alliance partners, has provided Immersive Technologies with the knowledge necessary to develop the industry standard in Advanced Equipment Simulators. Our solutions incorporate the industry's most advanced training functionality ensuring your operators are safer and your site is more profitable.

