

# G266

## Conversion Kit<sup>®</sup> for Cat<sup>®</sup> 16M & 24M Graders



Ask to see Immersive Technologies' extensive catalog of quantified business improvements, solving problems in areas such as safety, productivity, reactive maintenance and the availability of skilled equipment operators.

**REAL RESULTS**  
MEAN IMPROVEMENTS\*

**SAFETY**

- ↑ 54% Correct Emergency Response
- ↓ 47% Traffic Incidents

**UNSCHEDULED MAINTENANCE**

- ↓ 65% Brake Abuse
- ↓ 62% Engine Overspeed

**COST SAVINGS**

- ↓ 54% Training Hours on Equipment
- ↑ 20% Tire Life

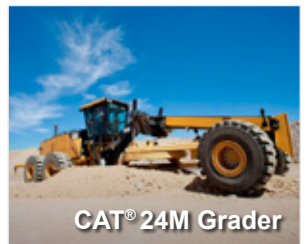
**PRODUCTIVITY**

- ↓ 15% Spot Time
- ↑ 14% Payloads

\* All results are average in-field improvements, documented and verified by external parties.

Immersive Technologies' Conversion Kit for the Cat<sup>®</sup> 16M and 24M Grader provides superior realism and training effectiveness for mines focused on increasing operator safety, improving productivity and reducing levels of unscheduled maintenance. Immersive Technologies' G266 Conversion Kit includes a complete replica cab of the Cat<sup>®</sup> 16M & 24M Graders, with fully functional controls and instrumentation.

With mining equipment becoming increasingly technically sophisticated, the level of information, experience and organizational competencies required to accurately simulate these machines also increases. Through Immersive Technologies' industry experience, you can be assured your training solution will be the only accurate and true representation of the real machine available.



# Expect Results G266 Conversion Kit® Cat® 16M & 24M Graders



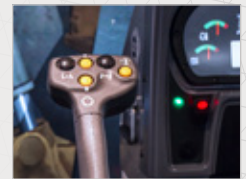
Genuine gauges and speedometer



Emulated Caterpillar Electronic Monitoring System (CEMS) LCD Display



Genuine multifunction controls including transmission, lean, articulation, steering and left hand blade.



Conversion Kit Features

CONVERSION KIT® COMPATIBLE WITH SIMULATORS

**PRO4 IM360 LX6 LX3**

## Innovative Simulator Training Software

Immersive Technologies' SimControl software includes a range of specific Cat® 16M & 24M operator errors for recording and measuring incorrect operator behaviors. In addition, SimControl allows a trainer to initiate machine faults or incidents in order to train and assess operators in responding appropriately.

Training opportunities include:

- Hazard Avoidance
- Correct Startup Procedure
- Control Familiarization
- Minimizing Unscheduled Maintenance



## Industry Leading Mining Simulators

As the world's largest supplier of mining equipment simulators, Immersive Technologies has deployed solutions in 45 countries and works closely with mining operations and equipment manufacturers to solve real industry problems in areas of safety, productivity, reactive maintenance and the availability of skilled personnel. Immersive Technologies is the only equipment simulator supplier with a consistent and proven track record of delivering significant and measurable in-field improvements.

This experience, together with ongoing feedback from our mining customer base and Original Equipment Manufacturer alliance partners, has provided Immersive Technologies with the knowledge necessary to develop the industry standard in Advanced Equipment Simulators. Our solutions incorporate the industry's most advanced training functionality ensuring your operators are safer and your site is more profitable.

