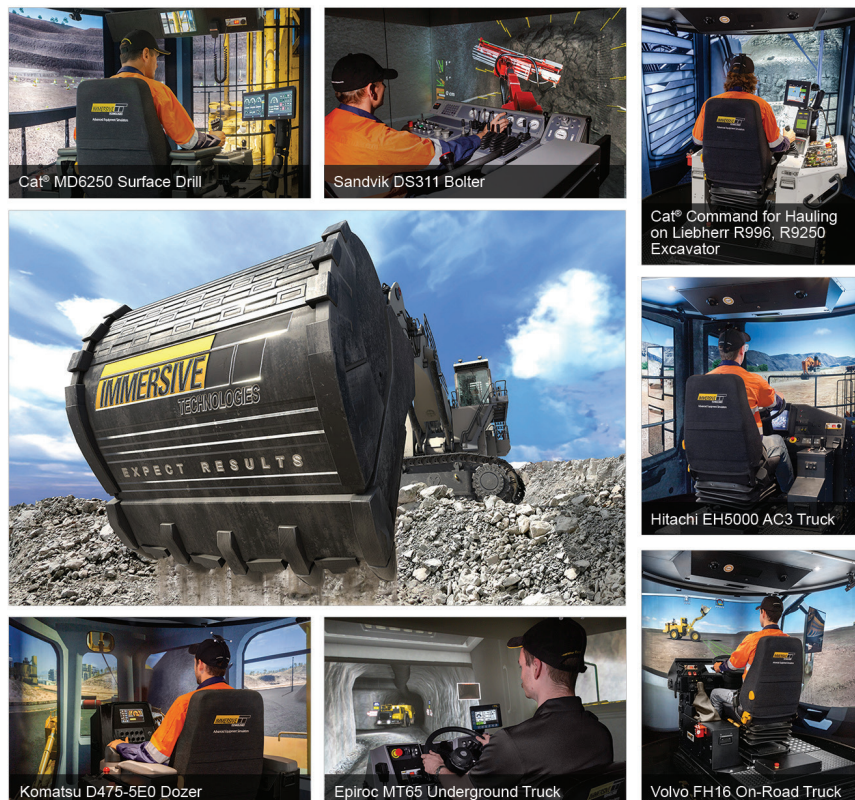


Multi-OEM Strategy: Immersive Technologies Powers Ahead for Superior Industry Support.

9 July 2019

Immersive Technologies has engaged in an unprecedented level of mining machine simulator development for a diverse range of Original Equipment Manufacturers (OEM) over the past year. This is set to continue with projects underway for new and existing customers to build simulators for heavy machinery manufactured by [Belaz](#), [Caterpillar](#), [Epiroc](#), [Hitachi](#), [Iveco](#), [Komatsu](#), [Liebherr](#), MACK and [Volvo](#).

In the last 12 months, Immersive Technologies has released new simulator modules (Conversion Kits®), for Cat Line of Sight Remote Control, Cat 777E Truck, Komatsu 930E-5 Truck, Liebherr R9200 Excavator, [Sandvik](#) DD311-40C Jumbo, Volvo FH16 Light Truck and many more.



Projects are underway to produce simulators for machines manufactured by Belaz, Caterpillar, Epiroc (Atlas Copco), Hitachi, Iveco, Komatsu, Liebherr, MACK and Volvo.

Investment in Conversion Kits® for multiple OEM machines is continuing unabated with projects in development within the next months for: Belaz 75131 Truck, Cat 994K Wheel Loader, Hitachi EX5600-7 Shovel, Komatsu 730E-8 Truck,

IMMERSIVE TECHNOLOGIES

Media Release



Phone: +61 8 9347 9011

Fax: +61 8 9347 9090

Email: enquiries@ImmersiveTechnologies.com

Web: www.ImmersiveTechnologies.com

E X P E C T R E S U L T S

Letourneau L-2350 Gen 2 Wheel Loader, Liebherr R9800 Excavator, Mack GU813E Light Truck and numerous more.

“Our investment in simulators for a diverse range of OEM’s machines is increasing, driven by demand from our customers. Immersive has always and will continue to be focused foremost on the needs of our customers, most of whom operate mixed OEM fleets. Immersive Technologies’ acquisition by Komatsu will not change our strategy, we will continue to support machines from all OEM’s, that’s what our customers expect”, said Wayde Salfinger, Executive Director – Marketing at Immersive Technologies.

Immersive Technologies credit its ongoing growth in demand on its proven and verifiable success in increasing mine profitability by optimizing the safety and productivity of equipment operators. These results are driven by a clear focus on integrating [People, Process, and Technology](#) to reduce risk, quantify training impact and effectively managing the training process.

###

About Immersive Technologies

Immersive Technologies is the world’s largest, proven and tested supplier of surface and underground Advanced Equipment Simulators to the global mining industry. The company has achieved this unique position by focusing on its mission to increase Customer profitability by optimizing the safety and productivity of their operators. Immersive Technologies’ Advanced Equipment Simulators are helping hundreds of mining companies around the world to increase their equipment operators’ safety and site profitability through effective simulation training.

With advanced simulator modules deployed in 44 countries, Immersive Technologies is dedicated to provide outstanding service. To deliver on this commitment the company has customer sales and support offices located close to its customers in Perth and Brisbane Australia, Salt Lake City USA, Fort McMurray, Ottawa & Vancouver Canada, Monterrey Mexico, Lima Peru, Santiago Chile, Belo Horizonte Brazil, Bochum Germany, Johannesburg South Africa, Jakarta Indonesia, Kolkata India and Moscow Russia.

Immersive has the global mining experience, innovative technology, product range, OEM relationships, proven support commitment and industry vision to partner with you to ensure your simulator training solution delivers the significant results you expect.

For more information and associated media please contact:

Andres Arevalo

Global Marketing Promotions Manager

Immersive Technologies

aarevalo@ImmersiveTechnologies.com | Tel: +61 (8) 9347 9011

www.ImmersiveTechnologies.com