

Roy Hill Chooses Immersive Technologies for Operator Training Solutions

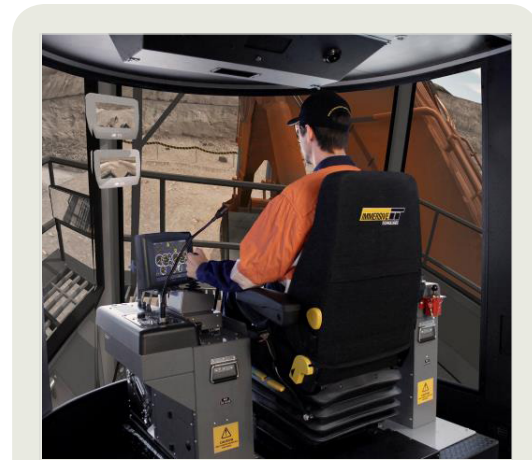
18 August 2014

Immersive Technologies simulation based training is a common sight in the Pilbara region of Western Australia and their footprint will continue to grow when the newest mine site, Roy Hill, opens in 2015. The project is expected to produce 55 million tonne per annum making it Australia's fourth biggest iron ore producer.

Roy Hill is an attractive option for employment with more than 5,000 expressions of interest or direct applications reported since the start of 2014.

"Roy Hill is a landmark mining project with a clear strategy to use technology to drive a competitive advantage. They have committed to ensure their employees will have the opportunity to develop and enhance their skills and we're pleased our simulation based training solutions will be a part of this effort," says David Anderson, Executive Vice President Sales and Support at Immersive Technologies.

Immersive Technologies' simulation based training solutions are in place at over 250 mine sites around the world including 12 of the top 15 iron ore producing countries.



Roy Hill has invested in multiple PRO3-B Advanced Equipment Simulators for haul trucks, excavators, dozers and wheel loaders from Immersive Technologies along with the simulator briefing, debriefing and live session training tool, SimMentor, as part of their training program for equipment operators.

##

About Immersive Technologies

Immersive Technologies is the world's largest, proven and tested supplier of surface and underground Advanced Equipment Simulators to the global mining industry. The company has achieved this unique position by focusing on its mission to make every mining and earthmoving equipment operator in the world safer and their employer more profitable through its simulation technologies. Immersive Technologies' Advanced Equipment Simulators are helping hundreds of mining companies around the world to increase their equipment operators' safety and site profitability through effective simulation training.

Immersive Technologies provides its customers with the most effective Advanced Equipment Simulators available. This is made possible through the formal exclusive licensing and technical information alliances Immersive has established with the leading Original Equipment Manufacturers (OEM), including: Caterpillar, Hitachi, Komatsu and Liebherr. These unique alliances provide

IMMERSIVE TECHNOLOGIES

Media Release



Phone: +61 8 9347 9011

Fax: +61 8 9347 9090

Simulation Delivering Safety and Productivity

Email: enquiries@ImmersiveTechnologies.com

Web: www.ImmersiveTechnologies.com

Immersive Technologies with exclusive access to the OEM's proprietary and confidential machine technical information that is required to correctly simulate the OEM's machines and is not available through other public or dealer channels.

With advanced simulators modules deployed in 37 countries, Immersive Technologies is dedicated to provide outstanding service. To deliver on this commitment the company has customer sales and support offices located close to its customers in Perth and Brisbane Australia, Salt Lake City USA, Calgary, Ottawa & Vancouver Canada, Monterrey Mexico, Lima Peru, Santiago Chile, Bochum Germany, Johannesburg South Africa, Jakarta Indonesia, Kolkata India and Riyadh, Saudi Arabia.

Immersive has the global mining experience, innovative technology, product range, OEM relationships, proven support commitment and industry vision to partner with you to ensure your simulator training solution delivers the significant results you expect.

For more information and associated media please contact:

Ashley Mullaney

Public Relations Manager

Immersive Technologies

amullaney@ImmersiveTechnologies.com | Tel: +61 (8) 9347 9011

www.ImmersiveTechnologies.com